

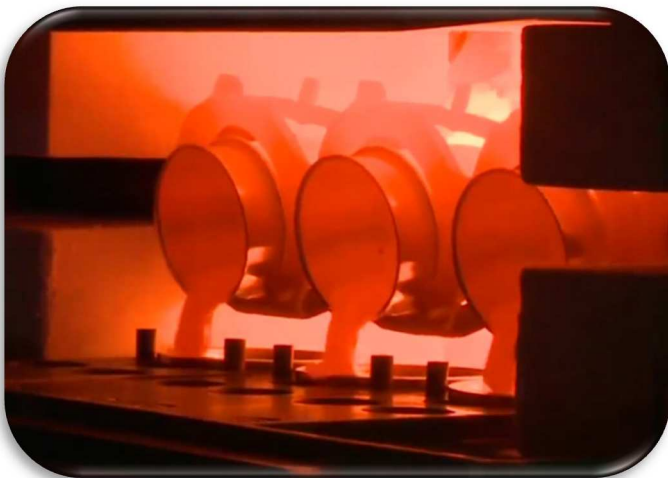
FusoMatic15

**AUTOMATED ELECTRIC
FUSION MACHINE
XRF FUSION**



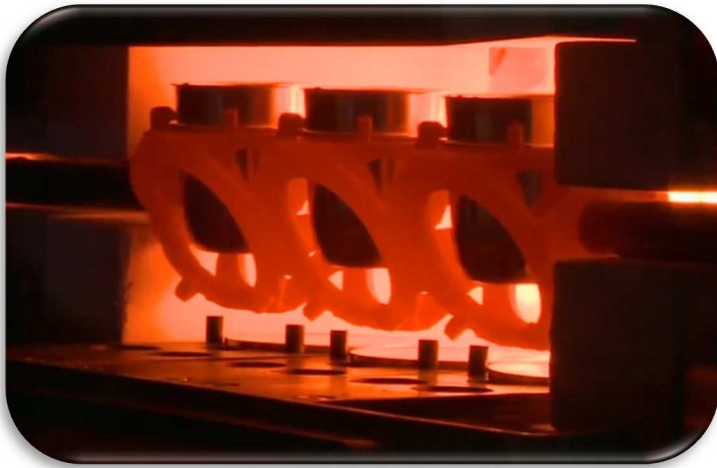
PLUG & FUSE

FULLY AUTOMATED FUSION SYSTEM, INTELLIGENT AND POWERFUL



SOCACHIM





FusoMatic15

**AUTOMATED ELECTRIC
FUSION MACHINE
XRF FUSION**

PERFORMANCE

- Fully automatic & reproducible sample preparation
- Powerful furnace with high-quality fibre material and SiC heating rods
- Innovative system for loading and unloading
- Crucible pre-cleaning station included
- Scope for further automation upgrades

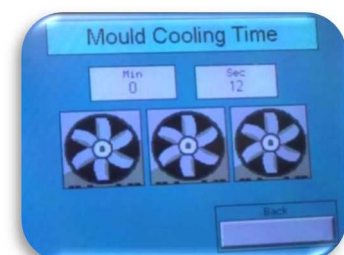
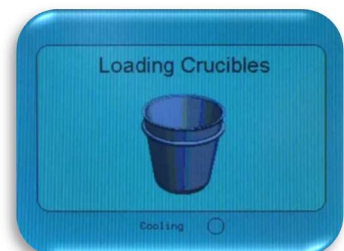


PRODUCTIVITY

- Three (3) samples per loading with 'nextbatch' load capability
- Production of 15 samples per hour

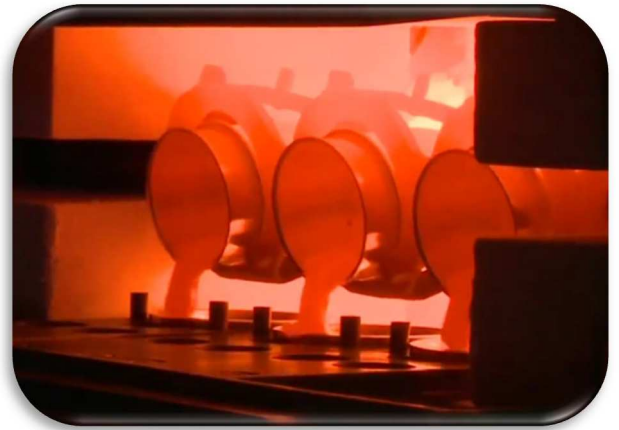
SIMPLICITY

- Easy select menu with constant clear display of machine status
- Simple operation but advanced technology, self checking to avoid errors
- High quality touch-screen interface
- Ready to fuse with pre-defined fusion methods
- Pre-heat/oxidation step available



FLEXIBILITY

- All fusion parameters can be modified:
 - Temperature(s), mixing speed, duration, cooling



Rugged, heavy duty unit, designed for continuous use

SAFETY

- Fully enclosed, lab staff are separated from hot material and from all moving parts
- Fully automatic 'cold → cold' operation, even the crucibles are returned cold
- Fitted with mould sensors, crucibles sensors, over temperature protection, Stop button, ...

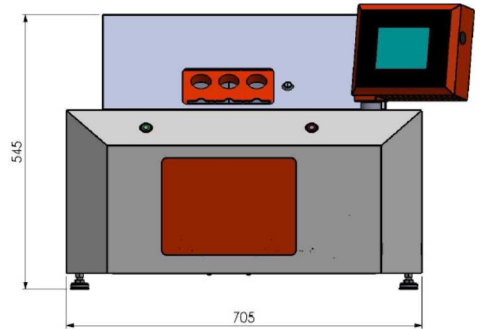
CONSTRUCTION

- Twin-skin construction. The steel cased heating module is separated from the outer skin by an air gap. A cooling fan draws air continuously between the inner and outer skins. (low external temperature ~50°C)
- The internal furnace chamber is insulated with high quality fibre material



TECHNICAL SPECIFICATIONS

- Electrical supply: 220-240 V / 20A, single phase
- Dimensions: 705mm(L) X 555mm(H) X 770mm(P)
- Weight: 80kg
- Temperature range: 300 – 1200°C
- Thermocouple: type "R"
- Over-temperature protection: Monitory control using a limit controller and discrete thermocouple



FUSOMATIC15 LABWARE



CRUCIBLES The crucibles are manufactured of 95% Pt, 5% Au alloy which is non-wetting and resists sample adhesion to the interior .

- | | | |
|---------------------------------|-------|--------------|
| • Standard Size, 43mm high; 40g | | Cat. No. FC1 |
|---------------------------------|-------|--------------|

MOULDS Corresponding to the diameter of the fused bead, different size and weight of moulds are available. They are also fabricated from 95% Pt/5% Au.

- | | | |
|--|-------|--------------|
| • 30/32mm Ø beads, 52mm flange; from 45 up to 100g | | Cat. No. FM2 |
| • 39/41mm Ø beads, 52mm flange; from 55 up to 100g | | Cat. No. FM8 |

Other sizes available on request

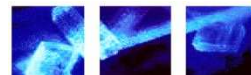
AVAILABLE SUPPORT.

- Advice on applications and uses
- Installation, calibration and training
- Inspection, Maintenance and Repair
- Consulting Services



Fluxes to suit
a wide variety of sample

SOCACHIM



282 avenue de Roodebeek
1030 Brussels/Belgium

Phone : +32 2 762 77 12

Fax : +32 2 762 55 07

E-mail : socachim@socachim.com

Internet: www.socachim.com