

Industrial Sieve Shaker

FTI | Industrial circular sieve shaker



Available in 4 models:

FTI-0550 : Ø550 mm

FTI-0800 : Ø800 mm

FTI-1200 : Ø1200 mm

FTI-1500 : Ø1500 mm

These machines are used for a wide range of purposes in the chemical industry, feeding, pharmacy, farming, recycling, water industry, etc.

Production from 100 up to 25.000 kg/h, depending on the product, the mesh and the volume of the machine's feeding.



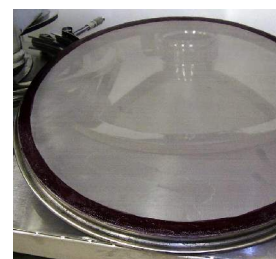
The industrial circular sieve shakers FTI are ready to work with liquids and solids products.

These machines are made in stainless steel AISI 304 or AISI 316.

They have an adjustable eccentric masse engines which let the product changes his behaviour on the metallic mesh. These engines make a balanced and vibration movement.

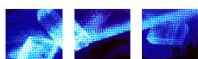
The circular bodies can support 1 up to 4 screens decks (up to 5 separations).

The body is isolated from the vibratory set with springs so that vibrations do not pass through the structural base.



These machines can be prepared to work in dust and gas explosive potential atmospheres (ATEX).

SOCACHIM



SOCACHIM

Av. du Capricorne 149,
1200 Brussels, Belgium

T +32 (0)2 762 77 12

F +32 (0)2 762 55 07

E socachim@socachim.com

www.socachim.com

Specifications

FTI-0550	220-230V or 380-400V; 50Hz; 1500rpm; 0.27kW Max Ø(with outlets) 710mm x Height 755mm
FTI-0800	220-230V or 380-400V; 50Hz; 1500rpm; 0.95kW Max Ø(with outlets) 1160mm x Height 920mm
FTI-1200	220-230V or 380-400V; 50Hz; 1500rpm; 1.32kW Max Ø(with outlets) 1680mm x Height 1026mm
FTI-1500	220-230V or 380-400V; 50Hz; 1500rpm; 1.32kW Max Ø(with outlets) 2096mm x Height 1140mm



Options

Stainless steel cover	Avoid dust for solid product or splashing for liquid
Perforated plate and cleaner rings set	Used to keep a clean mesh during production
Ultrasonic sieve	For fine sieving. Increase the productivity
Variable frequency drive	Immediate sieving regulation

