

# AIR JET SIEVING MACHINE

## FTLBA



The air jet sieving machines are used for particle test separation. Measuring range is included between 0.005 and 0.040 mm.

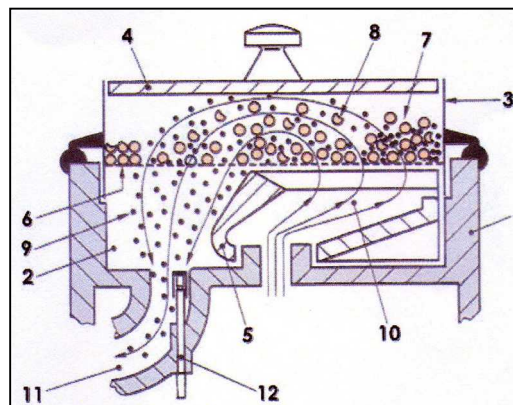
The machines have a polyurethane resin framework with an electronic power control provided of an operation time system and a vacuum indicator. The sieves are special and have a rubber joint.

The air jet sieving machine can be sold with the vacuum cleaner NILFISK GM 80. It is the most indicated machine to air jet sieving tests and it is able to create the decrease of pressure needed for the tests (since 20kPa).

## Include

- Air jet sieving machine
- Line power cord
- Methacrylate lid
- Small plastic hammer
- Operating instructions manual
- CE declaration of conformity
- Packing

Its working foundation is based on the use of air that tug thin particles to make them go through the sieve. This effect is made by a vacuum machine that provokes a controlled decrease of pressure.



- |                     |                      |                     |
|---------------------|----------------------|---------------------|
| 1. Framework        | 5. Revolving piece   | 9. Admitted product |
| 2. Plate            | 6. Metallic mesh     | 10. Air jet         |
| 3. Sieve            | 7. Particles to test | 11. Air outlet      |
| 4. Methacrylate lid | 8. Rejected product  | 12. Vacuum sensor   |

## Specifications and ordering information

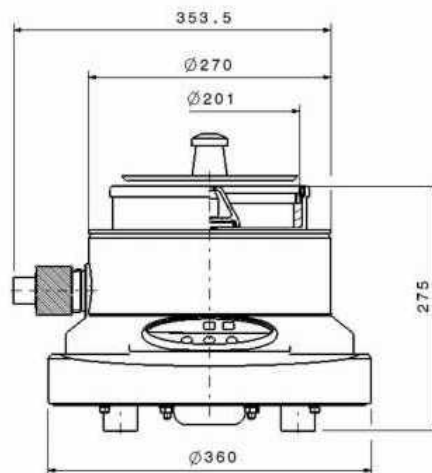
- ✓ FTLBA ..... Cat. No. FTLBA-0200
- ✓ Vacuum Machine NILFISK GM 80 ..... Cat. No. FTLBA-VA
- ✓ Option: Dust bags for vacuum machine (5 units) ..... Cat. No. FTLBA-DU5

### Technical specifications:

Power: 230Volt - 50/60Hz - 0.019kW.

Dimensions: 360mm(bottom Ø) x 275mm(H)

Weight: 40kg



www.socachim.com

Av. du Capricorne 149, 1200 Brussels/Belgium

TEL: +32 (0)2 762 77 12 FAX: +32 (0)2 762 55 07

socachim@socachim.com